

**COMING TO NONGSA?**

(Operational Hours: 0900 – 1700hrs Daily)

**INTERNATIONAL ARRIVAL**

- Please notify Nongsa Point Marina & Resort (NPMR) via e-mail at least 24hours prior to arrival.
- **Boats must be fitted with IMO approved AIS Class A/B.**
- **Passport/s must be valid for more than 6 months.**
- Fill up online [VESSEL DECLARATION](https://yachters-indonesia.id/) Form (**not earlier than 1 week**), for each visit from international waters. Vessel Declaration Form @ <https://yachters-indonesia.id/>.
- You must have with you the exit **Port Clearance, Crew/Passenger List with Immigration stamp**, and ensure your passports has proper outward stamps if required. Please keep spare copies of Boat Registry / Insurance / MMSI.
- Please fly Indonesian courtesy flag, 'N' and 'Q' from conspicuous point when entering Indonesian waters.
- On arrival in NPMR, CIQP officers will board your boat to check documents, boat, crews and passengers.
- Once check is done, lower flag 'N' and 'Q' and you may disembark your boat. Process may take 1 to 3 hours.

**IT IS AN OFFENCE TO LEAVE NPMR PREMISES UNLESS HAVING UNDERGONE CLEARANCE PROCEDURES ON ARRIVAL**

- Please pay visa-on-arrival if you want a one time extendable 30 days visa.
- Please check your passports for proper inward stamps and visa validity.
- Latest visa policy of Indonesia @ [https://en.wikipedia.org/wiki/Visa\\_policy\\_of\\_Indonesia](https://en.wikipedia.org/wiki/Visa_policy_of_Indonesia).
- For longer visa, please visit Directorate General of Immigration @ <http://www.imigrasi.go.id/index.php/en/>.

**INTERNATIONAL DEPARTURE**

- Please inform marina office 24hours in advance together with your passports.
- Marina office will prepare fresh crew/passenger list.
- CIQP officers may board your boat for inspection of documents, boat, crew and passengers. Officers will issue fresh Port Clearance / Customs / Quarantine papers whichever is required. Process may take 1 to 3 hours.
- Please check your passports for proper outward stamps.

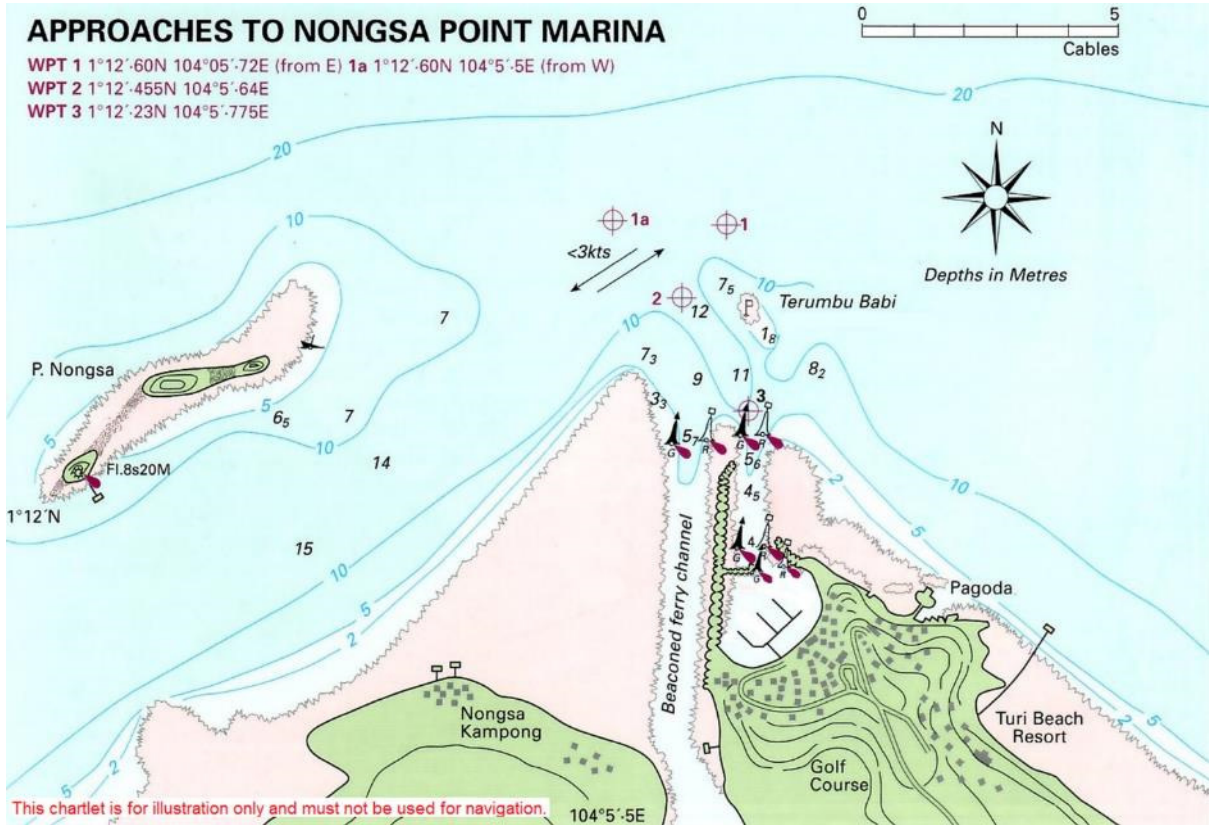
**IT IS AN OFFENCE TO LEAVE NPMR PREMISES BY LAND AFTER HAVING UNDERGONE CLEARANCE PROCEDURES FOR DEPARTURE.**

**DOMESTIC ARRIVAL**

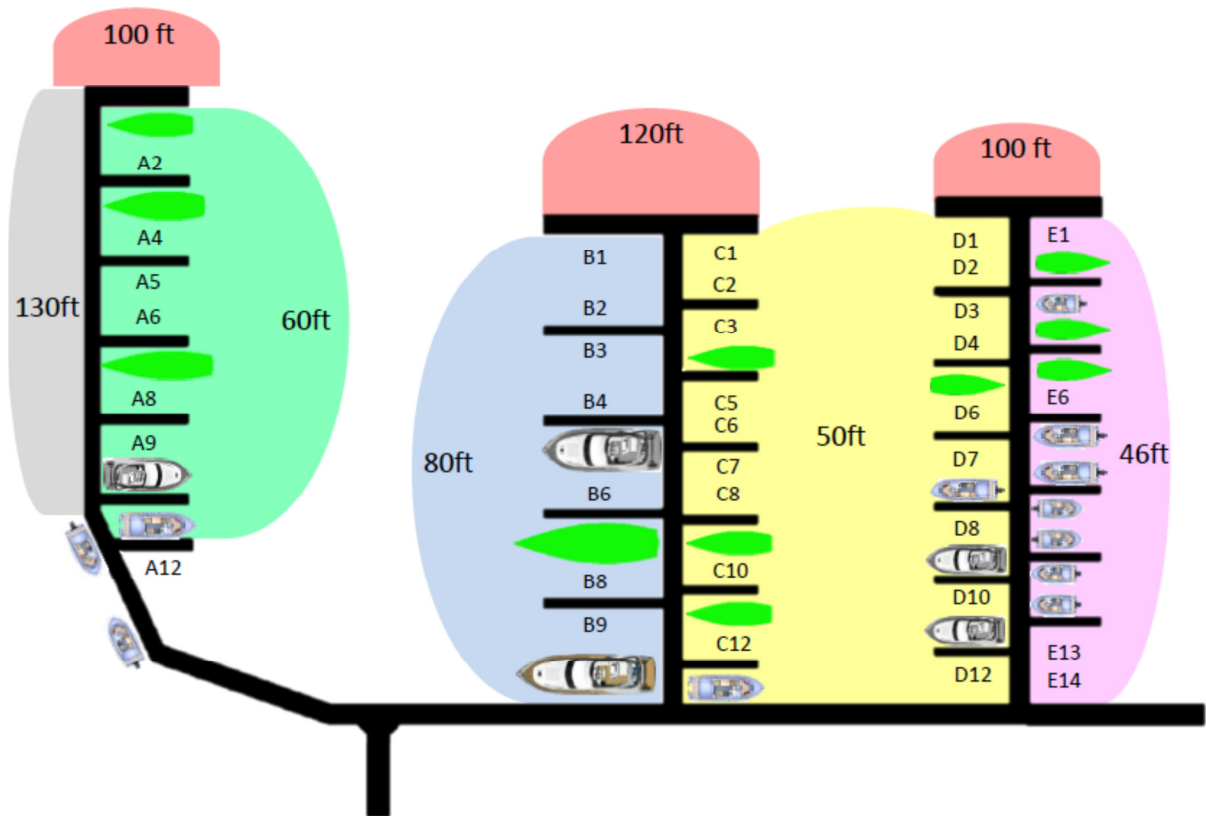
- Please inform marina office 24hours in advance via e-mail / phone.
- You must have with you domestic Port Clearance with Crew/Passenger List, and ensure your visa validity.
- Other documents required: Cruising & Vessel Declaration Form / Boat Registry / Insurance / MMSI.
- Fly Indonesian courtesy flag while in Indonesian waters.
- On arrival in NPMR, CIQP officers may board your boat to check documents, boat, crews and passengers.
- Once check is done, you may disembark your boat. Process may take 1 to 3 hours.

**DOMESTIC DEPARTURE**

- Please inform marina office 24hours in advance together with your passports or ID and the CRUISING Declaration Form duly completed.
- Marina office will prepare fresh crew/passenger list. CIQP officers may board your board for inspection of documents, boat, crew and passengers. Officers will issue fresh domestic Port Clearance / Customs / Quarantine papers whichever is required. Process may take 1 to 3 hours.
- **For any SHIPYARD clearance, 48hrs notice required. Process may take 24hours. Not available on Saturday, Sunday & Indonesia Public Holidays.**



### MARINA LAYOUT



### USEFUL CHECKLIST

#	ITEMS / DOCUMENTS	✓
1	PASSPORTS      QUANTITY:	
2	PORT CLEARANCE	
3	CREW LIST (with Immigration stamp)	
4	PASSENGER LIST (with immigration stamp)	
5	VESSEL DECLARATION	
6	CRUISING DECLARATION	
7	BOAT REGISTRY	
8	BOAT INSURANCE (COVER NOTE)	
9	MMSI DOCUMENT / RADIO LICENCE (AIS)	
10	VISA-ON-ARRIVAL (IF NECESSARY)	
11		
12		

## MARINA FEES

### Berthing rate

LOA	Daily / Day Trip	Monthly	Half Year	Yearly
≥ 30ft	IDR20K / foot	IDR300K / foot	Monthly X 5	Monthly X 9

<b>Utilities</b>	Water	IDR35K/m <sup>3</sup>
	Electricity	IDR2.5K/kWh

**Fuel** Diesel, petrol and outboard engine oil is available. Please check for latest price.

**CIQP fees** ≥ 30ft : IDR1,000K per boat per trip.  
 ≥ 100ft : IDR5 – 10 million per yacht per trip  
 Compulsory payable to the appointed agent via marina office.  
 Additional charges may be imposed if documents not in order or missing.

**Waste oil disposal:** IDR2,000/litre

### Marina General Rules and Regulations

These rules and regulations are intended to ensure the safe and enjoyable use of the marina. Non-compliance with these rules and regulations could result in expulsion from the marina, with no refund of fees.

- The overall length shall be the measurement from the extreme point of the bow to the extreme point on the stern, including all gear and appurtenances.
- Boat must be insured to be operated in Indonesian waters, against loss, damage, fire, third-party and other liabilities.
- Boat must be fitted with working IMO approved AIS Class A/B.
- Boat owners, Captains, their crew or guests are cautioned to be considerate of others. Discourteous conduct or disorder that might injure a person, cause damage to property, disturb other tenants or harm the reputation of the Marina/Resort will not be tolerated.
- Pets are permitted only if they DO NOT disturb others. Pets must be kept on a leash and under control at all times. Owners are responsible for cleaning up after pets. Noncompliance will result in the owner not being permitted to have any pets within the Marina/Resort.
- Pontoons must be kept clean, free and clear of stored materials.
- Berthing fees must be paid in advance. Refundable deposits will be imposed for longer terms.
- Boat occupying more than 50% of the width of a double-berth and boat operating commercially will be charged twice the prevailing rate.
- Above fees is inclusive of port & harbour taxes/dues with Terms & Conditions apply.
- Restaurant / miscellaneous bills to be paid weekly basis or before departure whichever is early.
- Utilities bills to be paid monthly basis or before departure whichever is early.
- The Management reserves the right to review and revise all rates and price without prior notice.